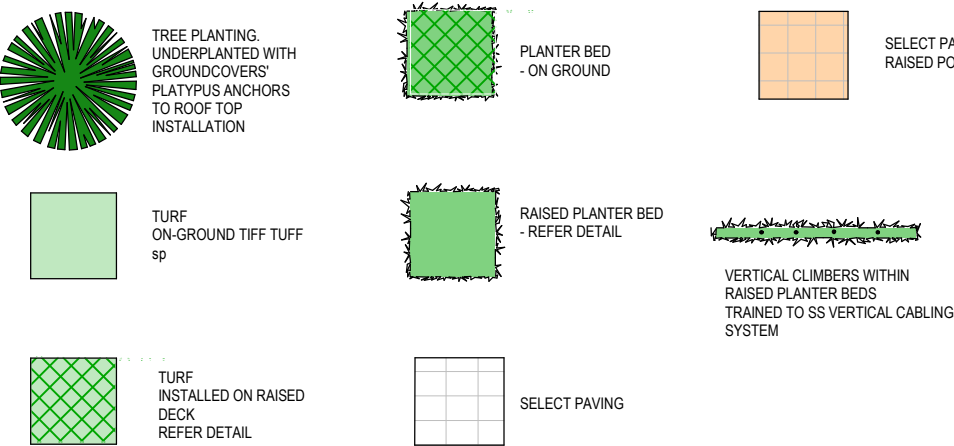


PROPOSED MIXED USE DEVELOPMENT AT 66 WILLIAM STREET & 25 CHURCH STREET, PORT MACQUARIE

LANDSCAPE CONCEPT PLAN

| Drawing No: | Description | Issue / Revision |
|-------------|-----------------------------------|------------------|
| CD01 | COVER PAGE | |
| CD02 | GROUND FLOOR ENTRY CHURCH STREET | |
| CD03 | GROUND FLOOR ENTRY WILLIAM STREET | |
| CD04 | 4TH FLOOR RESIDENCE | |
| CD05 | DETAILS | |



PROPOSED DEVELOPMENT



| | | | | | |
|------------------------------------------------------------------------------------------------------------------------------------------------------------------------------------------------------------------------------------------------------------------------------------|-----------------------------------------------------------------------------------------------------------------------------------------------------------------------------------------------------------------------------------------------------------------------------------------------------------------------------------------------------------------------------------------------------------------------------------------------------------------------------------------------------------------------------------------------------|-------------------------------------------------------------|------------------------------------------------------------------|---------------------------------------------------------------------------------------------------------------------------------------|--------------------------------------------------------------------------------------------------------------------------------------------------------------|
| <div>Landscape Documentation Services</div> <div>for PAULASTONEARCHITECT</div> <div>e paula@stonearchitect.com.au t 0412 485 893</div> <div>Registered landscape architect AILA reg. 001892 3 Melaluca Street Port Macquarie NSW 2444 e sellisla@yahoo.com.au t 0435 842 775</div> | <div>NOTE: DO NOT SCALE THIS DRAWING. REFER TO FIGURED DIMENSIONS ONLY. NOTIFY THE ARCHITECT OF ALL ERRORS / DISCREPANCIES / OMISSIONS. IMMEDIATELY. VERIFY ALL DIMENSIONS, LEVELS & SETOUT PRIOR TO COMMENCEMENT OF WORK, FABRICATION OR CONSTRUCTION. WORK ONLY FROM CONSTRUCTION ISSUE DOCUMENTATION. THIS DRAWING IS THE INTELLECTUAL PROPERTY OF THE ARCHITECT AND IS COPYRIGHT ©. NO PART MAY NOT BE USED, COPIED OR REPRODUCED WITHOUT THE EXPRESS WRITTEN PERMISSION OF THE ARCHITECT.</div> <div>0 10 20 30 40 50 = Full Size mm</div> | <div>Rev: A Date: 01.04.23 Description: DA SUBMISSION</div> | <div>DRAWN BY: SE</div> <div>CHECKED BY: OWNERS SIGNATURE:</div> | <div>Project Details: MIXED USE DEVELOPMENT 66 WILLIAM STREET + 25 CHURCH STREET</div> <div>Client: DR. J. HEISE PRELIMINARY DA</div> | <div>Drawing Title: COVER PAGE</div> <div>Scale @ A3: 1:1.04, 1:1</div> <div>Plot Date: 6/04/2023 Project No. 2006 Drawing No. CD01 Rev.</div> <div>A3</div> |
| | | | | | |

GROUND FLOOR
CHURCH STREET FACADE
AND ENTRY



DISTINCT DRIVEWAY SURFACE TREATMENT
AND NEW PEDESTRIAN PATHWAY

STREET TREE PLANTING AND
GROUNDCOVERS IN
DEDICATED ROAD PLANTER

DEEP SOIL PLANTER WITH TREE/SHRUBS
TO CHURCH STREET ENTRANCE.



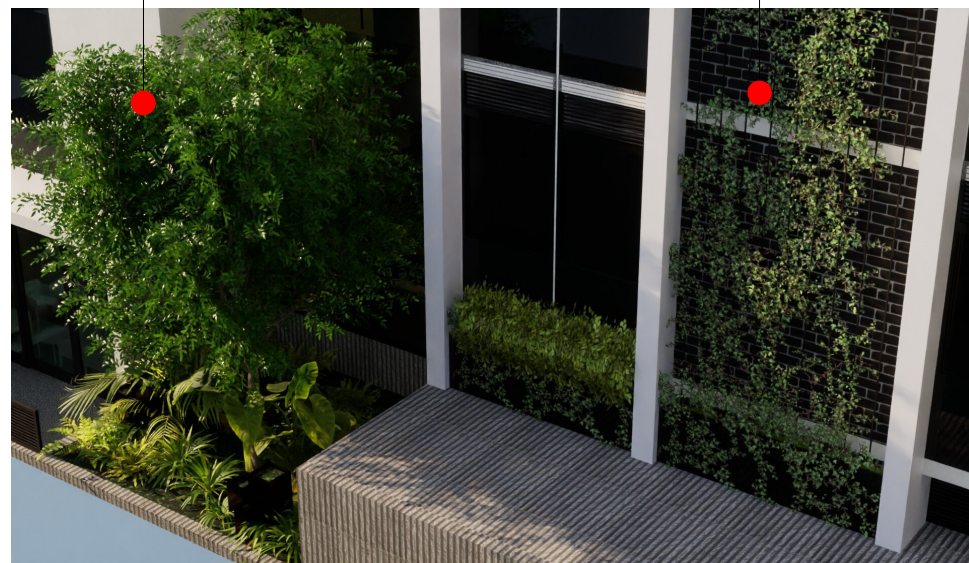
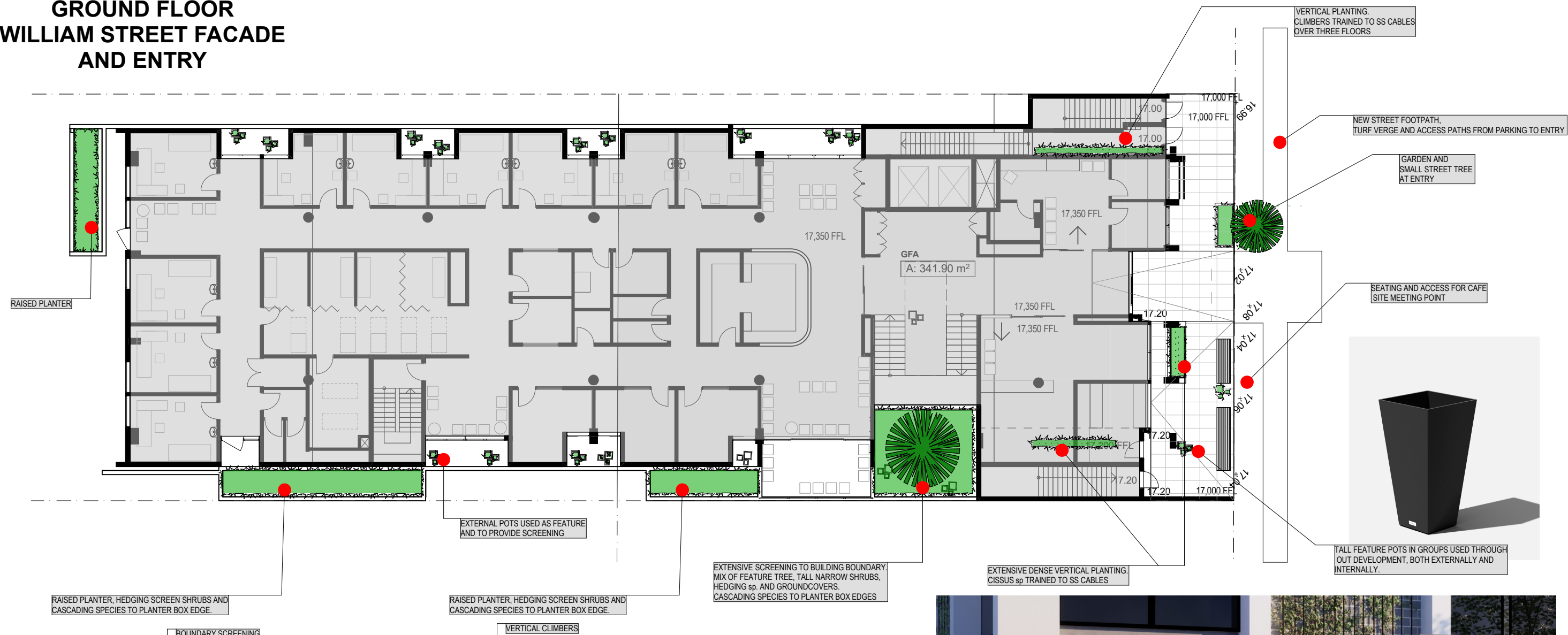
SCREEN PLANTING
WITHIN RAISED PLANTERS, ON GROUND
AND POTTED TO SIDE BOUNDARIES

RAISED PLANTER, HEDGING SCREEN SHRUBS AND
CASCADING SPECIES TO PLANTER BOX EDGE.

ON GROUND TALLER NARROW PLANTING TO BOUNDARY

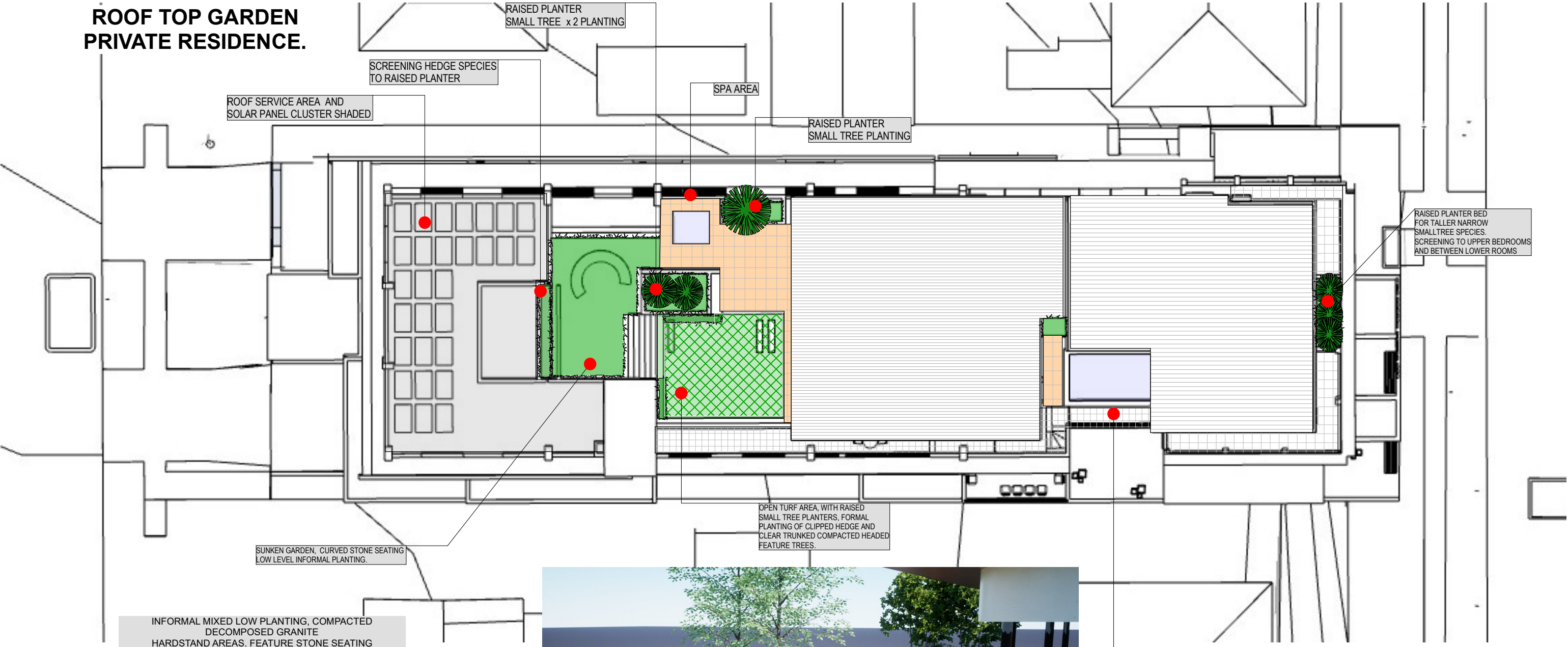
AREA
A: 1,033.

GROUND FLOOR WILLIAM STREET FACADE AND ENTRY



| | | | | | | | | | | | | |
|-------------------------------------------------------------------------------------------------------------------------------------------------------------------------------------------------------------------------------------------------------------------------------------------------------------------------------------------------------------------------------------------------------------------------------------------------------------------------------------------------------------|------------------------------------------------------------------------------------------------------------------------------------------------------------------|------|----------|---------------|-------------------|------------------|------------------------------------------------------------------|----------------|-----------------------------------------|-------------------|------|----|
| <div>Landscape Documentation Services</div> <div>for PAULASTONEARCHITECT</div> <div>e paula@stonearchitect.com.au t 0412 485 893</div> | <div>Registered landscape architect AILA reg. 001892 3 Melalucca Street Port Macquarie NSW 2444 e sellisla@yahoo.com.au t 0435 842 775</div> | Rev: | Date: | Description | DRAWN BY: | Project Details: | MIXED USE DEVELOPMENT 66 WILLIAM STREET + 25 CHURCH STREET | Drawing Title: | GROUND FLOOR ENTRY WILLIAM STREET | Scale @ A3: 1:200 | | |
| | | A | 01.04.23 | DA SUBMISSION | CHECKED BY: | | | | | | | |
| | | | | | OWNERS SIGNATURE: | | | | | | | |
| | | | | | SE | | | | | | | |
| | | | | | | | | | | | | |
| | | | | | | | | | | | | |
| <div>NOTE: DO NOT SCALE THIS DRAWING. REFER TO FIGURED DIMENSIONS ONLY. NOTIFY THE ARCHITECT OF ALL ERRORS / DISCREPANCIES / OMISSIONS. IMMEDIATELY VERIFY ALL DIMENSIONS, LEVELS & SETOUT PRIOR TO COMMENCEMENT OF WORK, FABRICATION OR CONSTRUCTION. WORK ONLY FROM CONSTRUCTION ISSUE DOCUMENTATION. THIS DRAWING IS THE INTELLECTUAL PROPERTY OF THE ARCHITECT AND IS COPYRIGHT ©. NO PART MAY NOT BE USED, COPIED OR REPRODUCED WITHOUT THE EXPRESS WRITTEN PERMISSION OF THE ARCHITECT.</div> | | | | | | Client: | DR. J. HEISE | Plot Date: | Project No. | Drawing No. | Rev. | A3 |
| | | | | | | PRELIMINARY DA | 6/04/2023 | 2006 | CD03 | | | |

ROOF TOP GARDEN
PRIVATE RESIDENCE.



OPEN TURF AREA AND MORE FORMAL CLIPPED PLANTING
TURF PLANTED INTO RAISED PAVING DECK,
FINISHED FLUSH WITH PAVING AND BUILDING ACCESS



POOL AREA, TROPICAL STYLE PLANTING
TO POOL DECK, FLUSH WITH BUILDING ACCESS

| Rev: | Date: | Description |
|------|----------|---------------|
| A | 01.04.23 | DA SUBMISSION |
| | | |
| | | |
| | | |
| | | |
| | | |
| | | |
| | | |

DRAWN BY:
CHECKED BY:
OWNERS SIGNATURE:
SE

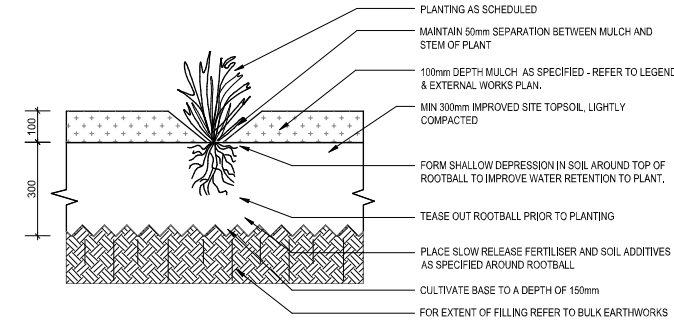
Project Details:
**MIXED USE DEVELOPMENT
66 WILLIAM STREET + 25
CHURCH STREET**

Client:
DR. J. HEISE
PRELIMINARY DA

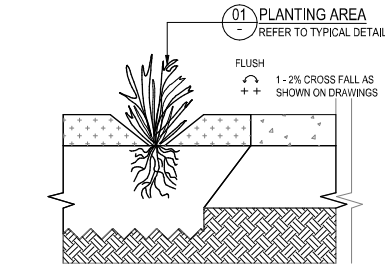
Drawing Title:
**4TH FLOOR
RESIDENCE**

Scale @ A3: 1:200, 1:1

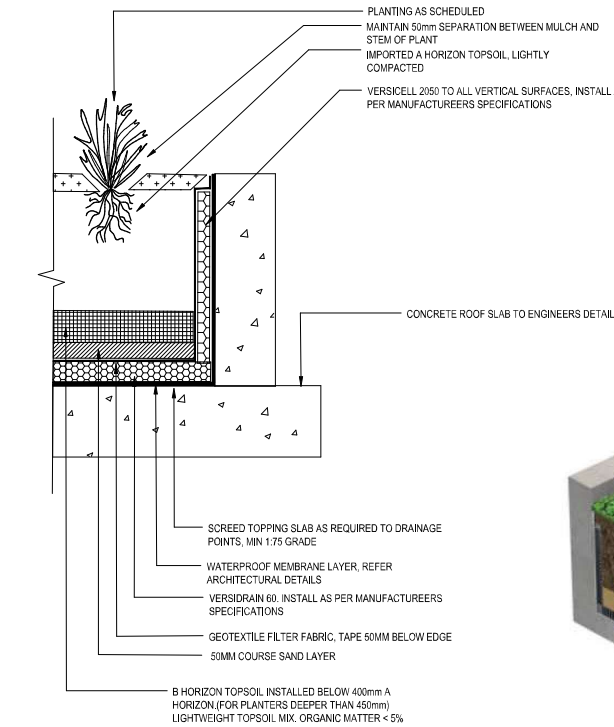
Plot Date: 6/04/2023
Project No. 2006
Drawing No. CD04
Rev. **A3**



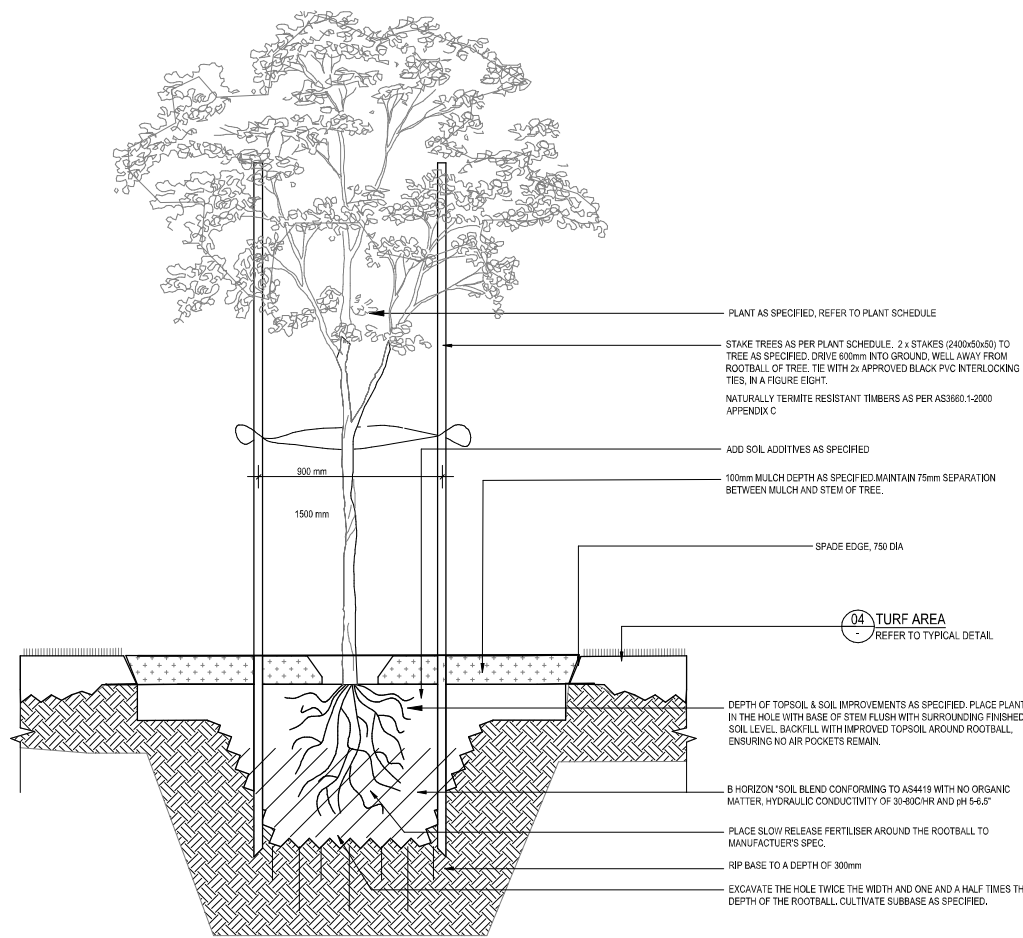
01 TYPICAL DETAIL: PLANTING AREA
SECTION 1:10



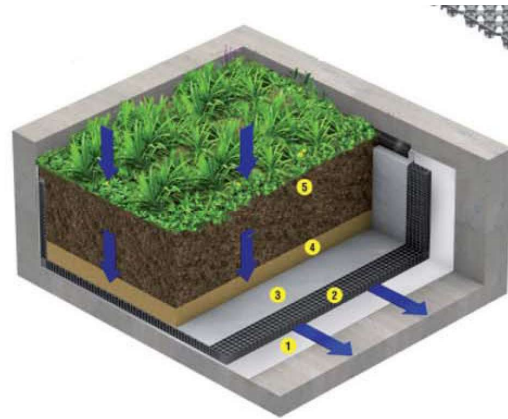
02 TYPICAL DETAIL: PLANTING TP PAVEMENT GROUND LEVEL
SECTION 1:10



03 TYPICAL DETAIL: PLANTER BED
SECTION 1:10



04 STREET TREE PLANTING - 100 ltr
SECTION 1:10



Planter Box and Landscape Deck

1. Waterproof Membrane
2. VersiFlex®
3. Geotextile
4. Coarse Sand
5. Growth Media



ROOF TOP PLANTER STRUCTURE FOR
TURF AND RAISED GARDEN BEDS

CONCEPT PLANT SCHEDULE

TREES

Cupaniopsis anacardioides / tuckeroo
Elaeocarpus reticulatus 'Prima Donna' / Blueberry Ash
Waterhousea floribunda 'Sweeper' / Weeping Lilly Pilly

SHRUBS

Alpinia caerulea 'Red Back' / Native Ginger
Alpinia nutans / Ginger
Bambus 'textilis gracilis' / Clumping Bamboo
Banksia spinulosa / Birthday Candles
Chamaedorea microspadix / Bamboo Palm
Crinum pedunculatum / Swamp Lily
Doryanthes excelsa / Gynea Lily
Ficus microcarpa / Green Island
Ficinia nodosa
Hymenocallis littoralis / Spider Lily
Liriope Evergreen Giant / Liriope
Lomandra longifolia 'Tanika' / Dwarf Mat Rush
Lomandra conferta
Lomandra 'Lucky Stripe'
Leucophyta Brownii
Pandorea pandorana - Wonga Wonga Vine
Phormium tenax Bronze Baby New Zealand Flax
Pittosporum tobira 'Miss Muffett' TM / Mock Orange
Raphiolepis 'Cosmic Pink'
Syzygium australe select form / Lilly Pilly
Syzygium x Cascade / Lilly Pilly
Syzygium 'Pinnacle' / Lilly Pilly
Westringia fruticosa 'Zena' / Zena Coast Rosemary
Westringia 'Mundi' / Coast Rosemary

GROUND COVER - CLIMBERS

Carpobrotus glaucescen 'Aussie Rambler'
Trachelospermum Tricolor
Hibbertia scandens
Myoporum insulare 'Prostrate'
Pandorea pandorana - Wonga Wonga Vine



FEATURE CLIMBER TO VERTICAL CABLE
SYSTEM
CISSUS ELLEN DANICA



BANKSIA 'BIRTHDAY CANDLES'



FICUS MICROCARPA 'GREEN ISLAND.'



LOMANDRA TANIKA



RAPHIOLEPIS 'COSMIC PINK'



GARDENIA sp



ALPINIA NUTANS

DA